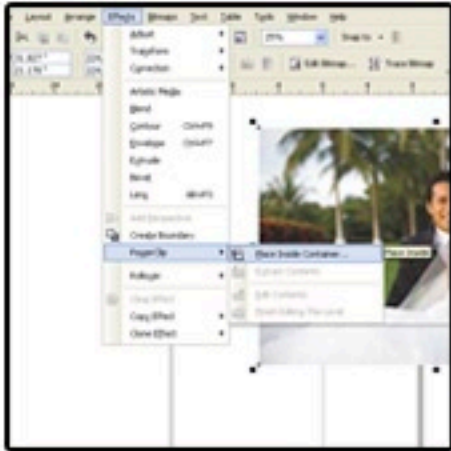


Setting Up Your Mural Image

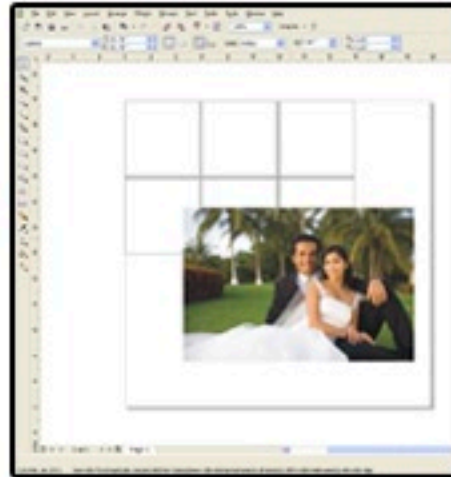
Tip Sheet for Sizing Images for the ChromaLuxe Hanging Mural in Corel DRAW

A.



1) Bring your image into Corel DRAW. Create a rectangle with the proper dimensions of the size of the mural you want to create. Use the PowerClip function to insert the image into the rectangle. Using the Edit Contents function, scale the image to fit in the rectangle as well as you can (hold Ctrl while dragging to scale proportionately). Save and close the file. (Figure A)

B.



2) Open the template found on www.unisub.com. It is setup for a 4'x4' mural. Simply delete any squares not necessary for your mural. Select the remaining squares and Group them. Do not forget to do this, as it is essential for the process to work properly.

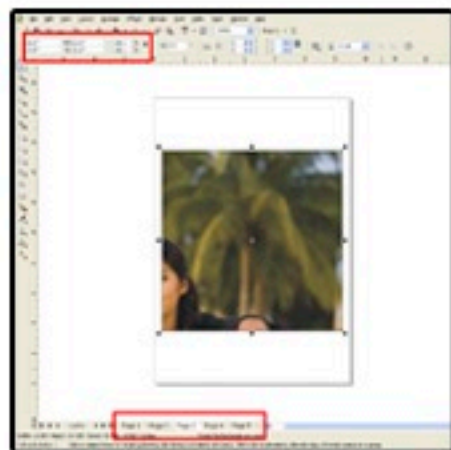
C.



3) Drag the file you previously used in Step 1 from its location on your computer into the template file. This should bring your PowerClipped image into the workspace. (Figure B)

4) Use the PowerClip once more to clip the image into the group of squares. Once it is inside, Ungroup the squares. (Figure C)

D.



5) Create a new page for each panel (ex - if you have 12 panels, create 11 more pages in your document). Cut and Paste the individual panels from the first page onto the other pages. (Figure D, bottom)

6) On each page, select the panel and resize it to 12"x12" (or 5.925"x5.925" for small panels). This is to compensate for bleed and panel spacing. Save your file. (Figure D, top)

7) Print each page individually.